



检测报告 编号: T52310250398TC 日期: 2023 年 02 月 22 日 第 1 页 共 14 页

揭阳市英利达实业有限公司  
揭阳空港经济区溪南西寨村新溪围东二巷 10 号

以下是客户提供的关于委托测试样品的信息:

产品名称 : 线材  
货号 : SWRCH18A(1018)  
产地 : 福建三明

\*\*\*\*\*

收样日期 : 2023 年 02 月 13 日  
测试周期 : 2023 年 02 月 13 日至 2023 年 02 月 22 日



SGS-CSTC Technical Services Co., Ltd.  
Shenzhen Branch Testing Center Hardlines

Unless otherwise agreed in writing, this document is issued by the Company subject to its General Conditions of Service printed overleaf, available on request or accessible at <http://www.sgs.com/en/Terms-and-Conditions.aspx> and, for electronic format documents, subject to Terms and Conditions for Electronic Documents at <http://www.sgs.com/en/Terms-and-Conditions/Terms-e-Documents.aspx>. Attention is drawn to the limitation of liability, indemnification and jurisdiction issues defined therein. Any holder of this document is advised that information contained hereon reflects the Company's findings at the time of its intervention only and within the limits of Client's instructions, if any. The Company's sole responsibility is to its Client and this document does not exonerate parties to a transaction from exercising all their rights and obligations under the transaction documents. This document cannot be reproduced except in full, without prior written approval of the Company. Any unauthorized alteration, forgery or falsification of the content or appearance of this document is unlawful and offenders may be prosecuted to the fullest extent of the law. Unless otherwise stated the results shown in this test report refer only to the sample(s) tested and such sample(s) are retained for 30 days only.  
Attention: To check the authenticity of testing / inspection report & certificate, please contact us at telephone:(86-755) 8307 1443, or email: CN.Doccheck@sgs.com

Room 101-901, Plant 4 & Room 101, Plant 2 & Room 101, Plant 3 & Room 301-501, Plant 3, Jianghao (Bantian) Industrial Plant Area, No.430, Jihua Road, Bantian Community, Bantian Street, Longgang District, Shenzhen, Guangdong, China 518129 www.sgs.com.cn  
中国·广东·深圳市龙岗区坂田街道坂田社区吉华路 430 号江豪 (坂田) 工业厂区厂房 4 号 101-901、2 号 101、3 号 101、3 号 301-501 邮编: 518129 t:(86-755) 25328888 sgs.china@sgs.com

Member of the SGS Group (SGS SA)



检测报告 编号: T52310250398TC 日期: 2023 年 02 月 22 日 第 2 页 共 14 页

根据客户要求要求进行指定测试, 详细信息请参阅测试结果页面:

测试项目		结论
1.	QSOP 0006 - 3600 (版本 11.00, 2021 年 08 月 20 日) — 重金属元素	符合
2.	欧盟指令 2015/863/EU (修订欧盟指令 2011/65/EU 附录 2)	--
	铅, 汞, 镉, 六价铬, 多溴联苯和多溴联苯醚的含量	符合
	邻苯二甲酸酯含量	符合
3.	钴的含量	详见结果

\*\*\*\*\* 详细资料请参见附页 \*\*\*\*\*

通标标准技术服务有限公司深圳分公司  
授权代表签署

屈萍

授权签字人



SGS-CSTC Standards Technical Services Co., Ltd.  
Shenzhen Branch Testing Center Hardlines

Unless otherwise agreed in writing, this document is issued by the Company subject to its General Conditions of Service printed overleaf, available on request or accessible at <http://www.sgs.com/en/Terms-and-Conditions.aspx> and, for electronic format documents, subject to Terms and Conditions for Electronic Documents at <http://www.sgs.com/en/Terms-and-Conditions/Terms-e-Documents.aspx>. Attention is drawn to the limitation of liability, indemnification and jurisdiction issues defined therein. Any holder of this document is advised that information contained hereon reflects the Company's findings at the time of its intervention only and within the limits of Client's instructions, if any. The Company's sole responsibility is to its Client and this document does not exonerate parties to a transaction from exercising all their rights and obligations under the transaction documents. This document cannot be reproduced except in full, without prior written approval of the Company. Any unauthorized alteration, forgery or falsification of the content or appearance of this document is unlawful and offenders may be prosecuted to the fullest extent of the law. Unless otherwise stated the results shown in this test report refer only to the sample(s) tested and such sample(s) are retained for 30 days only.  
Attention: To check the authenticity of testing / inspection report & certificate, please contact us at telephone: (86-755) 8307 1443, or email: CN.Doccheck@sgs.com

Room 101-501, Plant 4 & Room 101, Plant 2 & Room 101, Plant 3 & Room 301-501, Plant 3, Jianghao (Bantian) Industrial Plant Area, No. 430, Jihua Road, Bantian Community, Bantian Street, Longgang District, Shenzhen, Guangdong, China 518129 [www.sgs.com](http://www.sgs.com)  
中国·广东·深圳市龙岗区坂田街道坂田社区吉华路 430 号江豪 (坂田) 工业厂区厂房 4 号 101-901、2 号 101、3 号 301-501 邮编: 518129 t: (86-755) 25328888 [sgs.china@sgs.com](mailto:sgs.china@sgs.com)

Member of the SGS Group (SGS SA)

结果:

**QSOP 0006-3600 (版本 11.00, 2021 年 08 月 20 日) — 重金属元素**

方法: 参考 QSOP 0006-3600 (版本 11.00, 2021 年 08 月 20 日)

分析仪器为电感耦合等离子体发射光谱仪 (ICP-OES) / 汞元素分析仪 (DMA) / 电感耦合等离子体质谱仪 (ICP-MS) / 紫外可见分光光度计 (UV-VIS) / 气相色谱-质谱联用仪 (GC-MS) 离子色谱仪-紫外/可见光检测器 (IC-UV/VIS) / 液相色谱-离子体质谱联用仪 (LC-ICP-MS)

**条款 2.3 — 非成人使用的产品 (包括销往巴西并设计为收藏品的玩偶)**

**条款 2.3.2 — 金属, 玻璃, 宝石, 陶瓷**

**条款 2.3.2.2 — 小部件**

金属, 玻璃, 宝石, 陶瓷

测试项目		结果 (ppm)	MDL (ppm)	允许上限 (ppm)
		1		
总镉	(Cd)	ND	5	75
总铅	(Pb)	ND	10	90
总镍	(Ni)	111	100	10000
总锑	(Sb)	ND	30	--
总砷	(As)	35	30	--
总钴	(Co)	42	30	--

样品描述:

1. 暗银色金属杆



Unless otherwise agreed in writing, this document is issued by the Company subject to its General Conditions of Service printed overleaf, available on request or accessible at <http://www.sgs.com/en/Terms-and-Conditions.aspx> and, for electronic format documents, subject to Terms and Conditions for Electronic Documents at <http://www.sgs.com/en/Terms-and-Conditions/Terms-e-Documents.aspx>. Attention is drawn to the limitation of liability, indemnification and jurisdiction issues defined therein. Any holder of this document is advised that information contained hereon reflects the Company's findings at the time of its intervention only and within the limits of Client's instructions, if any. The Company's sole responsibility is to its Client and this document does not exonerate parties to a transaction from exercising all their rights and obligations under the transaction documents. This document cannot be reproduced except in full, without prior written approval of the Company. Any unauthorized alteration, forgery or falsification of the content or appearance of this document is unlawful and offenders may be prosecuted to the fullest extent of the law. Unless otherwise stated the results shown in this test report refer only to the sample(s) tested and such sample(s) are retained for 30 days only.

Attention: To check the authenticity of testing / inspection report and certificate, please contact us at telephone: (86-755) 8307 1443, or email: [CN.Doccheck@sgs.com](mailto:CN.Doccheck@sgs.com)

Room 101-501, Plant 4 & Room 101, Plant 2 & Room 101, Plant 3 & Room 301-501, Plant 3, Jianghao (Bantian) Industrial Plant Area, No. 430, Jihua Road, Bantian Community, Bantian Street, Longgang District, Shenzhen, Guangdong, China 518129 [www.sgs.com](http://www.sgs.com)  
 中国·广东·深圳市龙岗区坂田街道坂田社区吉华路 430 号江豪 (坂田) 工业厂区厂房 4 号 101-501、2 号 101、3 号 301-501 邮编: 518129 t: (86-755) 25328888 [sgs.china@sgs.com](mailto:sgs.china@sgs.com)

Member of the SGS Group (SGS SA)

测试项目	可溶性方法 1 测试结果（ppm）		MDL （ppm）	允许上限 （ppm）
	1			
可溶性铝	(Al)	ND	50	28130
可溶性锑	(Sb)	ND	5	60
可溶性砷	(As)	ND	2.5	25
可溶性钡	(Ba)	ND	10	1000
可溶性硼	(B)	ND	50	15000
可溶性镉	(Cd)	ND	5	17
可溶性铬	(Cr)	ND	5	60
可溶性六价铬	(Cr(VI))	—	—	0.053
可溶性钴	(Co)	ND	10	130
可溶性铜	(Cu)	ND	50	7700
可溶性铅	(Pb)	ND	2.3	23
可溶性锰	(Mn)	ND	50	15000
可溶性汞	(Hg)	ND	5	60
可溶性镍	(Ni)	ND	10	930
可溶性硒	(Se)	ND	10	460
可溶性锶	(Sr)	ND	50	56000
可溶性锡	(Sn)	ND	2.5	180000
可溶性有机锡	--	--	--	12
可溶性锌	(Zn)	ND	50	46000

#### 样品描述:

##### 1. 暗银色金属杆

备注: 依照 QSOP 0006-3600 (版本 11.00, 2021 年 08 月 20 日) 条款 1.2.8 的要求, 金属材料的可溶性有机锡测试可以豁免。



SGS-CSTC Testing Technology Co., Ltd.  
Shenzhen Branch Testing Center Hardlines

Unless otherwise agreed in writing, this document is issued by the Company subject to its General Conditions of Service printed overleaf, available on request or accessible at <http://www.sgs.com/en/Terms-and-Conditions.aspx> and, for electronic format documents, subject to Terms and Conditions for Electronic Documents at <http://www.sgs.com/en/Terms-and-Conditions/Terms-e-Documents.aspx>. Attention is drawn to the limitation of liability, indemnification and jurisdiction issues defined therein. Any holder of this document is advised that information contained hereon reflects the Company's findings at the time of its intervention only and within the limits of Client's instructions, if any. The Company's sole responsibility is to its Client and this document does not exonerate parties to a transaction from exercising all their rights and obligations under the transaction documents. This document cannot be reproduced except in full, without prior written approval of the Company. Any unauthorized alteration, forgery or falsification of the content or appearance of this document is unlawful and offenders may be prosecuted to the fullest extent of the law. Unless otherwise stated the results shown in this test report refer only to the sample(s) tested and such sample(s) are retained for 30 days only.

Attention: To check the authenticity of testing / inspection report and certificate, please contact us at telephone: (86-755) 8307 1443, or email: CN.Doccheck@sgs.com

Room 101-901, Plant 4 & Room 101, Plant 2 & Room 101, Plant 3 & Room 301-501, Plant 3, Jianghao (Bantian) Industrial Plant Area, No. 430, Jihua Road, Bantian Community, Bantian Street, Longgang District, Shenzhen, Guangdong, China 518129 [www.sgs.com](http://www.sgs.com)  
中国·广东·深圳市龙岗区坂田街道坂田社区吉华路 430 号江豪 (坂田) 工业厂区厂房 4 号 101-901、2 号 101、3 号 101、3 号 301-501 邮编: 518129 t: (86-755) 25328888 [sgs.china@sgs.com](mailto:sgs.china@sgs.com)

Member of the SGS Group (SGS SA)

## 条款 2.4 — 电子电气产品的其它要求

### 条款 2.4.2 — 产品所有部件

#### 产品所有部件

测试项目		结果 (ppm)	MDL (ppm)	允许上限 (ppm)
		1		
总镉	(Cd)	ND	5	75
总铬	(Cr)	416	5	见备注
总铅	(Pb)	ND	10	1000
总汞	(Hg)	ND	5	1000

#### 样品描述:

##### 1. 暗银色金属杆

备注: 因总铬含量未超过六价铬的允许上限 1000ppm 的要求, 故未进行六价铬含量测试。

- 说明:
- ppm = 百万分之一
  - MDL = 检出限
  - ND = 未检出 (低于 MDL)
  - 可溶性方法 1 的铬、汞、砷、钡、锑元素溶出量显示结果为修正后的分析结果。各元素的修正因子分别为铬: 30%, 汞: 36.2%, 砷: 46.8%, 钡: 30%, 锑: 60%。
  - 一=依照 QSOP 0006-3600 (版本 11.00, 2021 年 08 月 20 日) 第 3.3.10 条款的要求, 委托样品为非高风险材料, 不需要进行六价铬测试。



SGS-CTC Shenzhen Branch Testing Center Hardlines  
Shenzhen Branch Testing Center Hardlines

Unless otherwise agreed in writing, this document is issued by the Company subject to its General Conditions of Service printed overleaf, available on request or accessible at <http://www.sgs.com/en/Terms-and-Conditions.aspx> and, for electronic format documents, subject to Terms and Conditions for Electronic Documents at <http://www.sgs.com/en/Terms-and-Conditions/Terms-e-Documents.aspx>. Attention is drawn to the limitation of liability, indemnification and jurisdiction issues defined therein. Any holder of this document is advised that information contained hereon reflects the Company's findings at the time of its intervention only and within the limits of Client's instructions, if any. The Company's sole responsibility is to its Client and this document does not exonerate parties to a transaction from exercising all their rights and obligations under the transaction documents. This document cannot be reproduced except in full, without prior written approval of the Company. Any unauthorized alteration, forgery or falsification of the content or appearance of this document is unlawful and offenders may be prosecuted to the fullest extent of the law. Unless otherwise stated the results shown in this test report refer only to the sample(s) tested and such sample(s) are retained for 30 days only.

Attention: To check the authenticity of testing / inspection report & certificate, please contact us at telephone: (86-755) 8307 1443, or email: [CN.Doccheck@sgs.com](mailto:CN.Doccheck@sgs.com)

Room 101-501, Plant 4 & Room 101, Plant 2 & Room 101, Plant 3 & Room 301-501, Plant 3, Jianghao (Bantian) Industrial Plant Area, No. 430, Jihua Road, Bantian Community, Bantian Street, Longgang District, Shenzhen, Guangdong, China 518129 [www.sgs.com](http://www.sgs.com)  
中国·广东·深圳市龙岗区坂田街道坂田社区吉华路 430 号江灏 (坂田) 工业厂区厂房 4 号 101-901、2 号 101、3 号 301-501 邮编: 518129 t: (86-755) 25328888 [sgs.china@sgs.com](mailto:sgs.china@sgs.com)

Member of the SGS Group (SGS SA)

**欧盟指令 2015/863/EU (修订欧盟指令 2011/65/EU 附录 2) — 化学法测试铅, 汞, 镉, 六价铬, 多溴联苯和多溴联苯醚的含量**

方法: 参考 IEC62321-5: 2013 / IEC 62321-4: 2013+AMD1:2017 / IEC 62321-7-2:2017 / IEC62321-7-1:2015 / ISO 17075: 2017 / IEC62321-6:2015

分析仪器为电感耦合等离子体发射光谱仪 (ICP-OES) / 原子吸收光谱仪 (AAS) / 紫外-可见分光光度计 (UV-Vis) / 气相色谱-质谱联用仪 (GC/MS)

测试项目	单位	结果	MDL	允许上限
		1		
铅(Pb)	mg/kg	ND	2	1000
镉(Cd)	mg/kg	ND	2	100
汞(Hg)	mg/kg	ND	2	1000
符合性评价		符合	--	--

**样品描述:**

1. 暗银色金属杆

测试项目	单位	结果	MDL	允许上限
		1		
六价铬 (采用沸水萃取法) (CrVI)	µg/cm <sup>2</sup>	ND	0.10	#
符合性评价		符合	--	--

**样品描述:**

1. 暗银色金属杆



Unless otherwise agreed in writing, this document is issued by the Company subject to its General Conditions of Service printed overleaf, available on request or accessible at <http://www.sgs.com/en/Terms-and-Conditions.aspx> and, for electronic format documents, subject to Terms and Conditions for Electronic Documents at <http://www.sgs.com/en/Terms-and-Conditions/Terms-e-Documents.aspx>. Attention is drawn to the limitation of liability, indemnification and jurisdiction issues defined therein. Any holder of this document is advised that information contained hereon reflects the Company's findings at the time of its intervention only and within the limits of Client's instructions, if any. The Company's sole responsibility is to its Client and this document does not exonerate parties to a transaction from exercising all their rights and obligations under the transaction documents. This document cannot be reproduced except in full, without prior written approval of the Company. Any unauthorized alteration, forgery or falsification of the content or appearance of this document is unlawful and offenders may be prosecuted to the fullest extent of the law. Unless otherwise stated the results shown in this test report refer only to the sample(s) tested and such sample(s) are retained for 30 days only.

Attention: To check the authenticity of testing / inspection report and certificate, please contact us at telephone:(86-755) 8307 1443, or email: CN.Doccheck@sgs.com

Room 101-901, Plant 4 & Room 101, Plant 2 & Room 101, Plant 3 & Room 301-501, Plant 3, Jianghao (Bantian) Industrial Plant Area, No.430, Jihua Road, Bantian Community, Bantian Street, Longgang District, Shenzhen, Guangdong, China 518129 [www.sgs.com](http://www.sgs.com)  
 中国·广东·深圳市龙岗区坂田街道坂田社区吉华路 430 号江豪 (坂田) 工业厂区厂房 4 号 101-901、2 号 101、3 号 101、3 号 301-501 邮编: 518129 t:(86-755) 25328888 [sgs.china@sgs.com](mailto:sgs.china@sgs.com)

Member of the SGS Group (SGS SA)

测试项目	单位	结果	MDL	允许上限
		1		
多溴联苯总量 (PBBs)	mg/kg	ND	--	1000
一溴联苯	mg/kg	ND	5	--
二溴联苯	mg/kg	ND	5	--
三溴联苯	mg/kg	ND	5	--
四溴联苯	mg/kg	ND	5	--
五溴联苯	mg/kg	ND	5	--
六溴联苯	mg/kg	ND	5	--
七溴联苯	mg/kg	ND	5	--
八溴联苯	mg/kg	ND	5	--
九溴联苯	mg/kg	ND	5	--
十溴联苯	mg/kg	ND	5	--
多溴联苯醚总量 (PBDEs)	mg/kg	ND	--	1000
一溴联苯醚	mg/kg	ND	5	--
二溴联苯醚	mg/kg	ND	5	--
三溴联苯醚	mg/kg	ND	5	--
四溴联苯醚	mg/kg	ND	5	--
五溴联苯醚	mg/kg	ND	5	--
六溴联苯醚	mg/kg	ND	5	--
七溴联苯醚	mg/kg	ND	5	--
八溴联苯醚	mg/kg	ND	5	--
九溴联苯醚	mg/kg	ND	5	--
十溴联苯醚	mg/kg	ND	5	--
符合性评价		符合	--	--

样品描述:

1. 暗银色金属杆



SGS-CSTC 检验检测有限公司  
Shenzhen Branch Testing Center Hardlines

Unless otherwise agreed in writing, this document is issued by the Company subject to its General Conditions of Service printed overleaf, available on request or accessible at <http://www.sgs.com/en/Terms-and-Conditions.aspx> and, for electronic format documents, subject to Terms and Conditions for Electronic Documents at <http://www.sgs.com/en/Terms-and-Conditions/Terms-e-Documents.aspx>. Attention is drawn to the limitation of liability, indemnification and jurisdiction issues defined therein. Any holder of this document is advised that information contained hereon reflects the Company's findings at the time of its intervention only and within the limits of Client's instructions, if any. The Company's sole responsibility is to its Client and this document does not exonerate parties to a transaction from exercising all their rights and obligations under the transaction documents. This document cannot be reproduced except in full, without prior written approval of the Company. Any unauthorized alteration, forgery or falsification of the content or appearance of this document is unlawful and offenders may be prosecuted to the fullest extent of the law. Unless otherwise stated the results shown in this test report refer only to the sample(s) tested and such sample(s) are retained for 30 days only.

Attention: To check the authenticity of testing / inspection report & certificate, please contact us at telephone:(86-755) 8307 1443, or email: CN.Doccheck@sgs.com

Room 101-901, Plant 4 & Room 101, Plant 2 & Room 101, Plant 3 & Room 301-501, Plant 3, Jianghao (Bantian) Industrial Plant Area, No.430, Jihua Road, Bantian Community, Bantian Street, Longgang District, Shenzhen, Guangdong, China 518129 [www.sgs.com](http://www.sgs.com)  
中国·广东·深圳市龙岗区坂田街道坂田社区吉华路 430 号江豪 (坂田) 工业厂区厂房 4 号 101-901、2 号 101、3 号 101、3 号 301-501 邮编: 518129 t:(86-755) 25328888 [sgs.china@sgs.com](mailto:sgs.china@sgs.com)

Member of the SGS Group (SGS SA)



- 说明:
- mg/kg = 毫克每千克
  - $\mu\text{g}/\text{cm}^2$  = 微克每平方厘米
  - MDL = 检出限
  - ND = 未检出 (低于 MDL)
  - 允许上限来源于欧盟指令 2015/863/EU (修订欧盟指令 2011/65/EU 附录 2)

以下说明适用于结果表中出现的相关上标和符号的情况:

- -- = 未测试
- # 金属样品中  
当六价铬的浓度高于  $0.13 \mu\text{g}/\text{cm}^2$  时, 样品为阳性, 即含有六价铬;  
当六价铬的浓度为 ND(低于  $0.10 \mu\text{g}/\text{cm}^2$ ) 时, 样品为阴性, 即未检测到六价铬;  
当六价铬的浓度介于  $0.10 \mu\text{g}/\text{cm}^2$  与  $0.13 \mu\text{g}/\text{cm}^2$  之间时, 无法直接判定是否检测到六价铬, 因不同个体的样品表面差异可能会影响测定结果;  
由于未获知样品的存储条件和生产日期, 样品的六价铬测试结果仅能代表测试时样品含六价铬的状态。
- \* 超出允许上限

### 欧盟指令 2015/863/EU (修订欧盟指令 2011/65/EU 附录 2) - 邻苯二甲酸酯含量

方法: 参考 IEC 62321-8:2017

分析仪器为气相色谱-质谱联用仪 (GC-MS)

测试项目	单位	结果	MDL	允许上限
		1		
邻苯二甲酸二丁基酯 (DBP)	mg/kg	ND	50	1000
邻苯二甲酸苯基丁基酯 (BBP)	mg/kg	ND	50	1000
邻苯二甲酸二(2-乙基己基)酯 (DEHP)	mg/kg	ND	50	1000
邻苯二甲酸二异丁酯 (DIBP)	mg/kg	ND	50	1000



SGS-CTC Shenzhen Branch Testing Center Hardlines  
Shenzhen Branch Testing Center Hardlines

Unless otherwise agreed in writing, this document is issued by the Company subject to its General Conditions of Service printed overleaf, available on request or accessible at <http://www.sgs.com/en/Terms-and-Conditions.aspx> and, for electronic format documents, subject to Terms and Conditions for Electronic Documents at <http://www.sgs.com/en/Terms-and-Conditions/Terms-e-Documents.aspx>. Attention is drawn to the limitation of liability, indemnification and jurisdiction issues defined therein. Any holder of this document is advised that information contained hereon reflects the Company's findings at the time of its intervention only and within the limits of Client's instructions, if any. The Company's sole responsibility is to its Client and this document does not exonerate parties to a transaction from exercising all their rights and obligations under the transaction documents. This document cannot be reproduced except in full, without prior written approval of the Company. Any unauthorized alteration, forgery or falsification of the content or appearance of this document is unlawful and offenders may be prosecuted to the fullest extent of the law. Unless otherwise stated the results shown in this test report refer only to the sample(s) tested and such sample(s) are retained for 30 days only.

Attention: To check the authenticity of testing / inspection report & certificate, please contact us at telephone:(86-755) 8307 1443, or email: CN.Doccheck@sgs.com

Room 101-501, Plant 4 & Room 101, Plant 2 & Room 101, Plant 3 & Room 301-501, Plant 3, Jianghao (Bantian) Industrial Plant Area, No. 430, Jihua Road, Bantian Community, Bantian Street, Longgang District, Shenzhen, Guangdong, China 518129 [www.sgs.com](http://www.sgs.com)  
中国·广东·深圳市龙岗区坂田街道坂田社区吉华路 430 号江灏 (坂田) 工业厂区厂房 4 号 101-901、2 号 101、3 号 301-501 邮编: 518129 t:(86-755) 25328888 [sgs.china@sgs.com](mailto:sgs.china@sgs.com)

Member of the SGS Group (SGS SA)



## 样品描述:

### 1. 暗银色金属杆

- 说明:
- mg/kg = 毫克每千克
  - ND = 未检出 (低于 MDL)
  - MDL = 检出限
  - 1% = 10000 mg/kg = 10000 ppm

以下说明适用于结果表中出现的相关上标和符号的情况:

- + 根据客户要求混合测试, 以总试样重量来计算结果
- Δ 测试结果基于混合测试, 一组或多组材料有可能导致结果的不符合, 强烈建议单独测试样品中的每个组分。
- \* 超出允许上限



SGS-CSTC Technical Services Co., Ltd.  
Shenzhen Branch Testing Center Hardlines

Unless otherwise agreed in writing, this document is issued by the Company subject to its General Conditions of Service printed overleaf, available on request or accessible at <http://www.sgs.com/en/Terms-and-Conditions.aspx> and, for electronic format documents, subject to Terms and Conditions for Electronic Documents at <http://www.sgs.com/en/Terms-and-Conditions/Terms-e-Documents.aspx>. Attention is drawn to the limitation of liability, indemnification and jurisdiction issues defined therein. Any holder of this document is advised that information contained hereon reflects the Company's findings at the time of its intervention only and within the limits of Client's instructions, if any. The Company's sole responsibility is to its Client and this document does not exonerate parties to a transaction from exercising all their rights and obligations under the transaction documents. This document cannot be reproduced except in full, without prior written approval of the Company. Any unauthorized alteration, forgery or falsification of the content or appearance of this document is unlawful and offenders may be prosecuted to the fullest extent of the law. Unless otherwise stated the results shown in this test report refer only to the sample(s) tested and such sample(s) are retained for 30 days only.

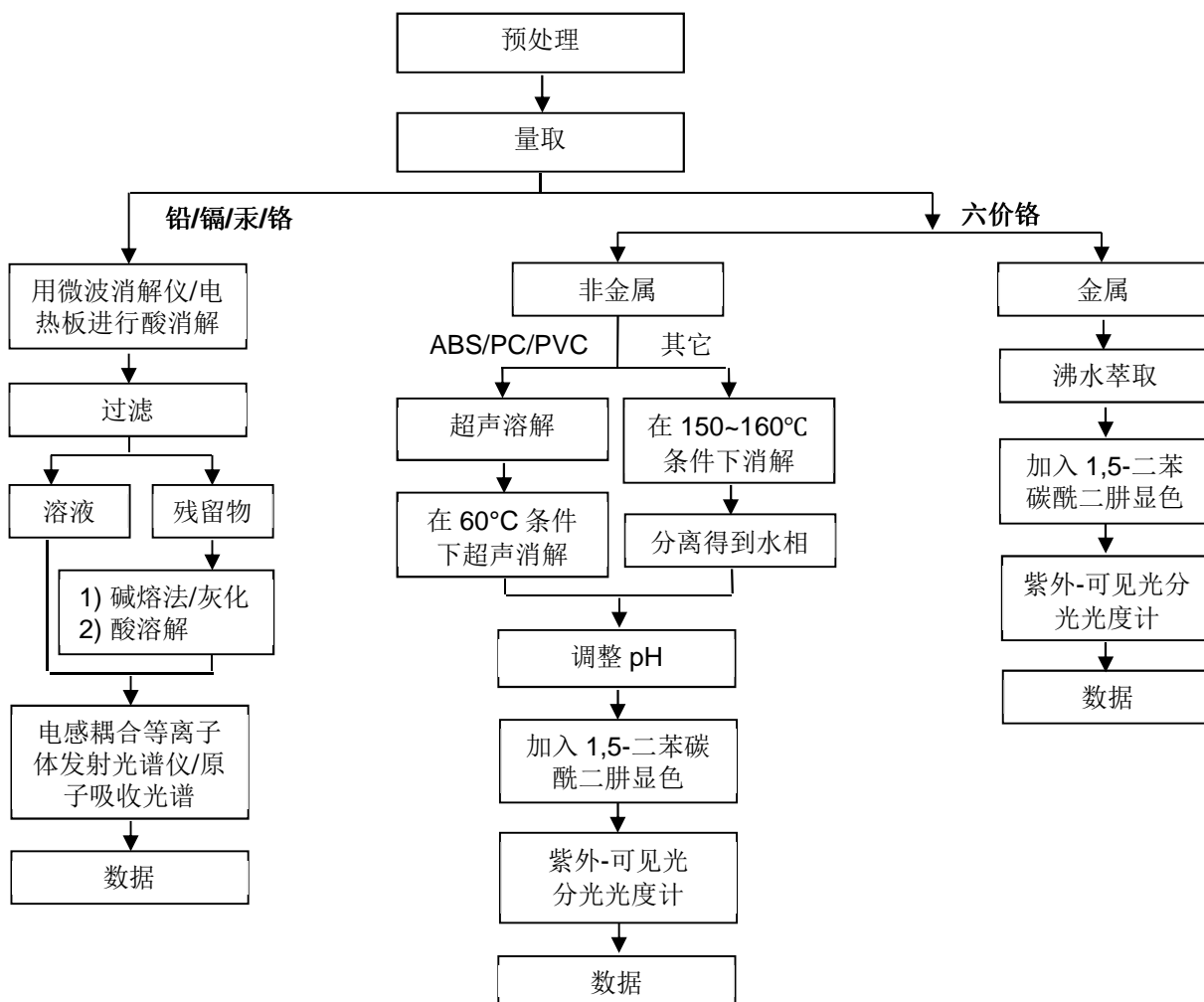
Attention: To check the authenticity of testing / inspection report & certificate, please contact us at telephone: (86-755) 8307 1443, or email: CN.Doccheck@sgs.com

Room 101-501, Plant 4 & Room 101, Plant 2 & Room 101, Plant 3 & Room 301-501, Plant 3, Jianghao (Bantian) Industrial Plant Area, No. 430, Jihua Road, Bantian Community, Bantian Street, Longgang District, Shenzhen, Guangdong, China 518129 www.sgs.com.cn  
中国·广东·深圳市龙岗区坂田街道坂田社区吉华路 430 号江豪 (坂田) 工业厂区厂房 4 号 101-901、2 号 101、3 号 301-501 邮编: 518129 t: (86-755) 25328888 sgs.china@sgs.com

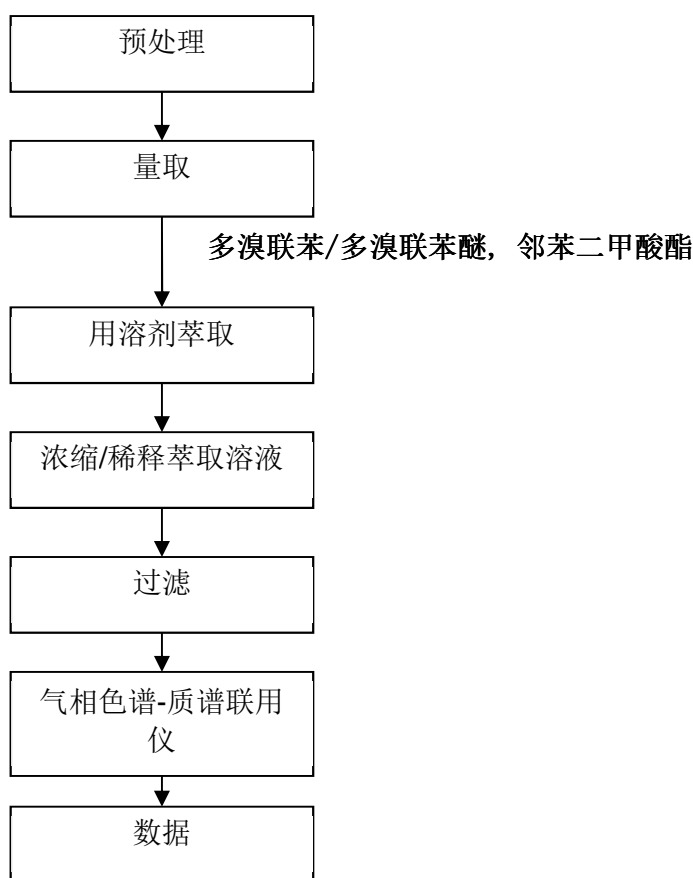
Member of the SGS Group (SGS SA)

## RoHS 测试流程图

样品按照下述流程被完全消解(六价铬测试除外)。



## RoHS 测试流程图





检测报告 编号: T52310250398TC 日期: 2023 年 02 月 22 日 第 12 页 共 14 页

## 钴含量

方法: 参考 CPSC-CH-E1003-09.1 / CPSC-CH-E1002-08.3 / CPSC-CH-E1001-08.3

分析仪器为电感耦合等离子体发射光谱仪 (ICP-OES)

测试项目	单位	1	MDL
钴 (Co)	ppm	42	10

## 样品描述:

### 1. 暗银色金属杆

- 说明:
- ppm = 百万分之一
  - MDL = 检出限
  - ND = 未检出 (低于 MDL)
  - 1% = 10000 mg/kg = 10000 ppm



SGS-CSTC (China) Technical Services Co., Ltd.  
Shenzhen Branch Testing Center Hardlines

Unless otherwise agreed in writing, this document is issued by the Company subject to its General Conditions of Service printed overleaf, available on request or accessible at <http://www.sgs.com/en/Terms-and-Conditions.aspx> and, for electronic format documents, subject to Terms and Conditions for Electronic Documents at <http://www.sgs.com/en/Terms-and-Conditions/Terms-e-Documents.aspx>. Attention is drawn to the limitation of liability, indemnification and jurisdiction issues defined therein. Any holder of this document is advised that information contained hereon reflects the Company's findings at the time of its intervention only and within the limits of Client's instructions, if any. The Company's sole responsibility is to its Client and this document does not exonerate parties to a transaction from exercising all their rights and obligations under the transaction documents. This document cannot be reproduced except in full, without prior written approval of the Company. Any unauthorized alteration, forgery or falsification of the content or appearance of this document is unlawful and offenders may be prosecuted to the fullest extent of the law. Unless otherwise stated the results shown in this test report refer only to the sample(s) tested and such sample(s) are retained for 30 days only.

Attention: To check the authenticity of testing / inspection report & certificate, please contact us at telephone:(86-755) 8307 1443, or email: CN.Doccheck@sgs.com

Room 101-501, Plant 4 & Room 101, Plant 2 & Room 101, Plant 3 & Room 301-501, Plant 3, Jianghao (Bantian) Industrial Plant Area, No.430, Jihua Road, Bantian Community, Bantian Street, Longgang District, Shenzhen, Guangdong, China 518129 [www.sgs.com](http://www.sgs.com)  
中国·广东·深圳市龙岗区坂田街道坂田社区吉华路 430 号江豪 (坂田) 工业厂区厂房 4 号 101-901、2 号 101、3 号 101、3 号 301-501 邮编: 518129 t:(86-755) 25328888 [sgs.china@sgs.com](mailto:sgs.china@sgs.com)

Member of the SGS Group (SGS SA)

备注:

- 检测报告仅用于客户科研、教学、内部质量控制、产品研发等目的, 仅供内部参考。
- 本文是编号为 T52310250397TC 的报告中文译本。中英文版本如有歧义, 概以英文版为准。
- 首页分隔符以上数据和/或信息由申请方提供, 本报告相关结果或结论仅针对这些数据
- 和/或信息做出, **SGS** 不对这些数据和信息的真实性、完整性以及由此引发的结果和/或结论的有效性负责。检测结果仅适用于收到的样品。
- 符合性判断采用带保护带的接受判定规则 (ISO/IEC GUIDE 98-4:2012 8.3.2), 当测量结果落入保护带内时, 只报告测量结果及其测量不确定度, 保护带宽度为包含概率为 95% 的扩展测量不确定度 ( $k=2$ ), 即  $w = U_{95}$ 。此判定规则的错误接受风险和错误拒绝风险均为 2.5%。

对于容许上限 ( $T_U$ ):

符合-测量结果低于  $T_U - U_{95}$ 。

不符合-测量结果高于  $T_U + U_{95}$ 。

不确定结果-测量结果落入保护带  $[T_U - U_{95}, T_U + U_{95}]$  内。

对于容许下限 ( $T_L$ ):

符合-测量结果高于  $T_L + U_{95}$ 。

不符合-测量结果低于  $T_L - U_{95}$ 。

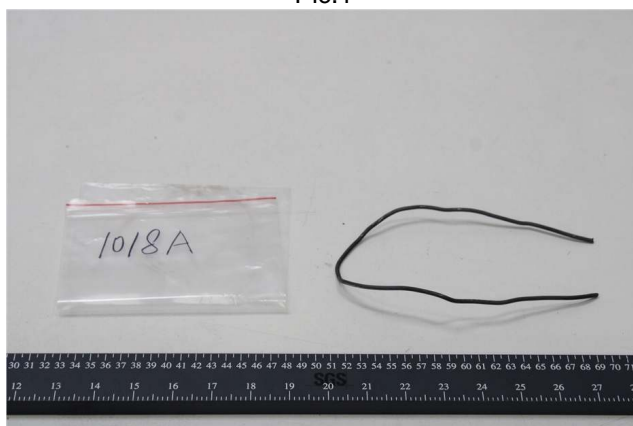
不确定结果-测量结果落入保护带  $[T_L - U_{95}, T_L + U_{95}]$  内。



检测报告 编号: T52310250398TC 日期: 2023 年 02 月 22 日 第 14 页 共 14 页

样品图片:

Pic.1



SGS 鉴别的样品图片

\*\*\*\*\* 报告完 \*\*\*\*\*



SGS-CSTC 检验检测服务有限公司  
Shenzhen Branch Testing Center Hardlines

Unless otherwise agreed in writing, this document is issued by the Company subject to its General Conditions of Service printed overleaf, available on request or accessible at <http://www.sgs.com/en/Terms-and-Conditions.aspx> and, for electronic format documents, subject to Terms and Conditions for Electronic Documents at <http://www.sgs.com/en/Terms-and-Conditions/Terms-e-Documents.aspx>. Attention is drawn to the limitation of liability, indemnification and jurisdiction issues defined therein. Any holder of this document is advised that information contained hereon reflects the Company's findings at the time of its intervention only and within the limits of Client's instructions, if any. The Company's sole responsibility is to its Client and this document does not exonerate parties to a transaction from exercising all their rights and obligations under the transaction documents. This document cannot be reproduced except in full, without prior written approval of the Company. Any unauthorized alteration, forgery or falsification of the content or appearance of this document is unlawful and offenders may be prosecuted to the fullest extent of the law. Unless otherwise stated the results shown in this test report refer only to the sample(s) tested and such sample(s) are retained for 30 days only.

Attention: To check the authenticity of testing / inspection report & certificate, please contact us at telephone:(86-755) 8307 1443, or email: CN.Doccheck@sgs.com

Room 101-501, Plant 4 & Room 101, Plant 2 & Room 101, Plant 3 & Room 301-501, Plant 3, Jianghao (Bantian) Industrial Plant Area No.430, Jihua Road, Bantian Community, Bantian Street, Longgang District, Shenzhen, Guangdong, China 518129 [www.sgs.com](http://www.sgs.com)  
中国·广东·深圳市龙岗区坂田街道坂田社区吉华路 430 号江豪 (坂田) 工业厂区厂房 4 号 101-901、2 号 101、3 号 101、3 号 301-501 邮编: 518129 t:(86-755) 25328888 [sgs.china@sgs.com](mailto:sgs.china@sgs.com)

Member of the SGS Group (SGS SA)